



Liveable Regional Cities of Bangladesh Project

Dr Hanna Ruszczyk
Institute of Hazard, Risk and Resilience
Department of Geography

Former Practitioner
United Nations (UNDP, ILO)

16 June 2020

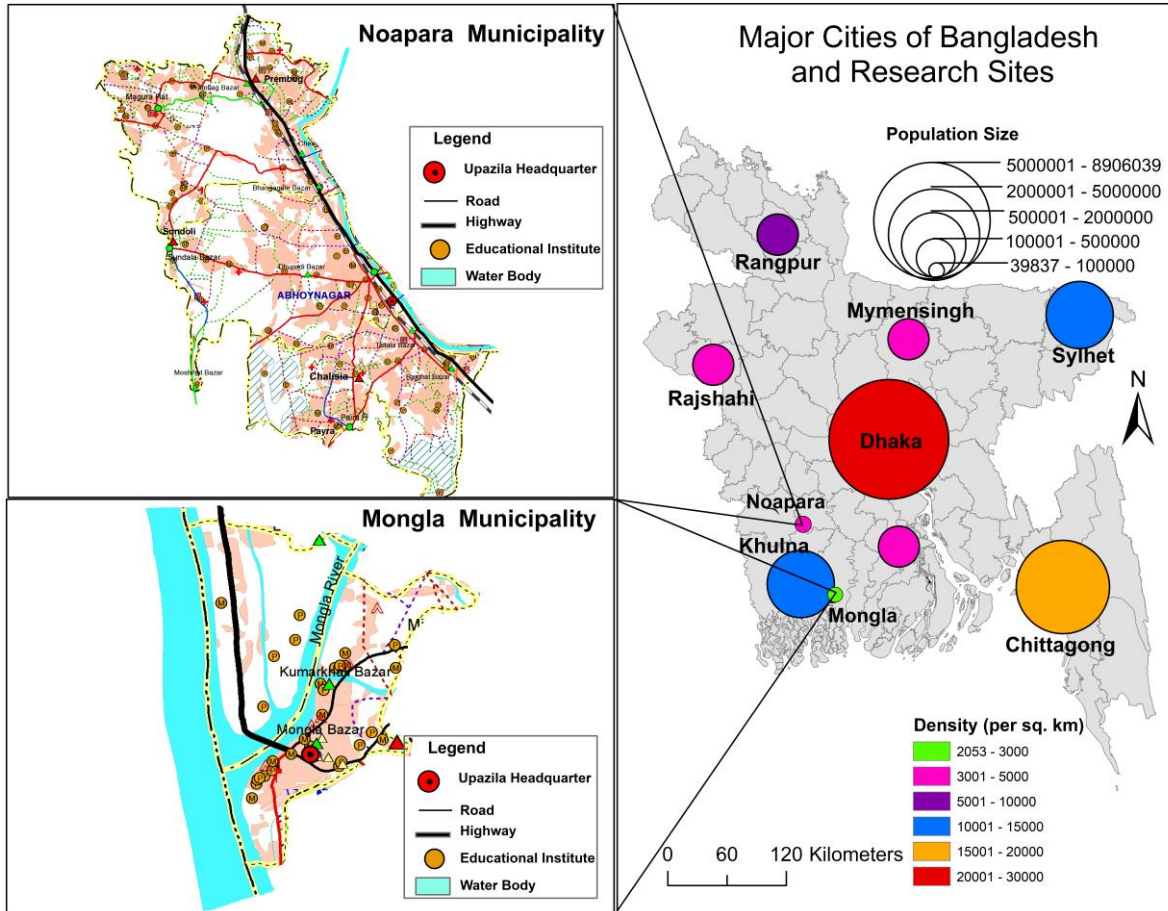
Research interests

- Smaller cities
- Intersections of everyday lives and events
- Invisible majority



Rose Wylie, British artist





Source: Juel Mahmud, ICCAD (2020)

Fieldwork Sept – Oct 2019



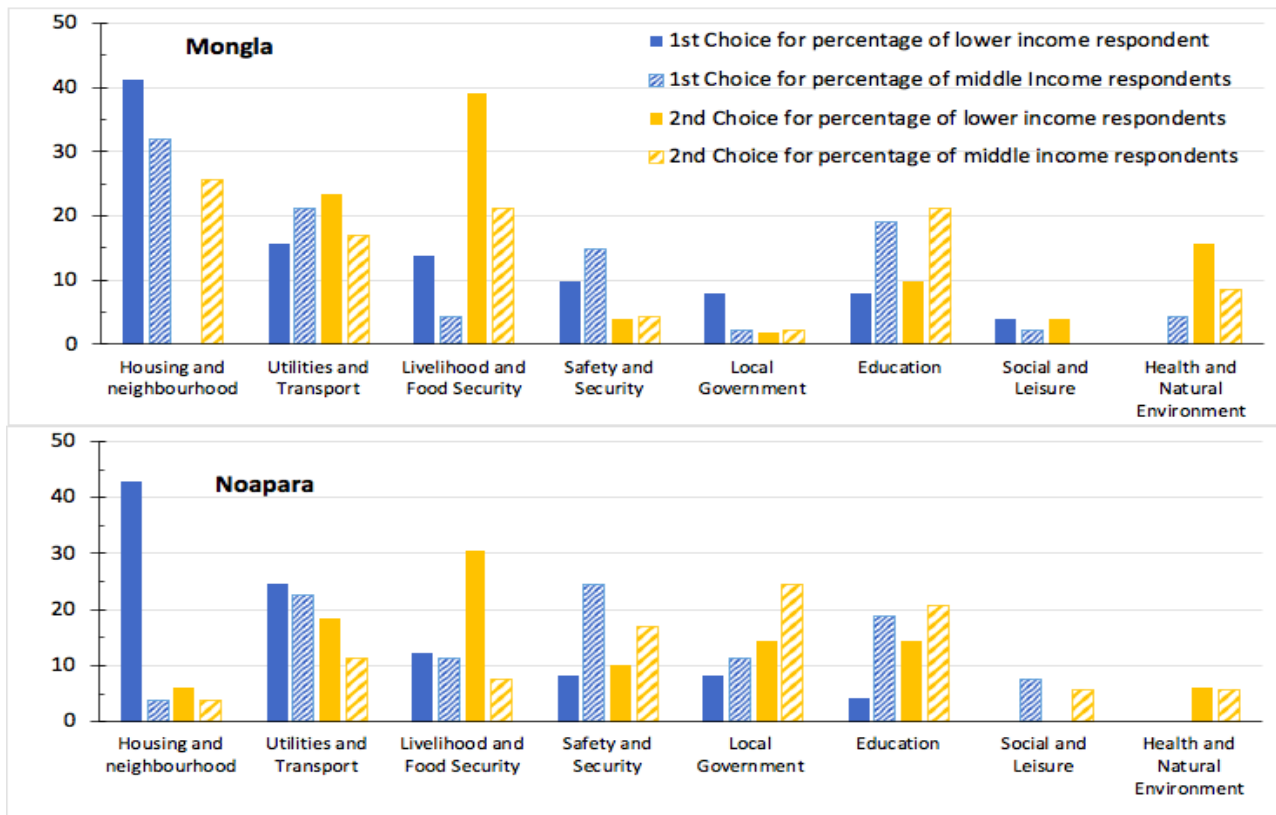
Methods

- Surveys
- Story telling workshop and street theatre
- Photography
- Semi structured interviews
- Focus group discussions

The background of the slide is a close-up of a purple fabric with intricate embroidery. The embroidery features a central floral motif with a dark purple center and reddish-orange petals, surrounded by a wide, textured gold-colored border. Scattered throughout the purple fabric are smaller, individual reddish-orange floral or leaf-like motifs.

What I learnt through the concept of Liveability

2020



Top two factors of liveability according to survey respondents in Mongla and Noapara
 Source: Sumaiya Binte Selim Sudha, ICCCAD (2020)

Main Findings

- Liveability is contextual
- Difference between viable and liveable
- Temporality of liveability

Website

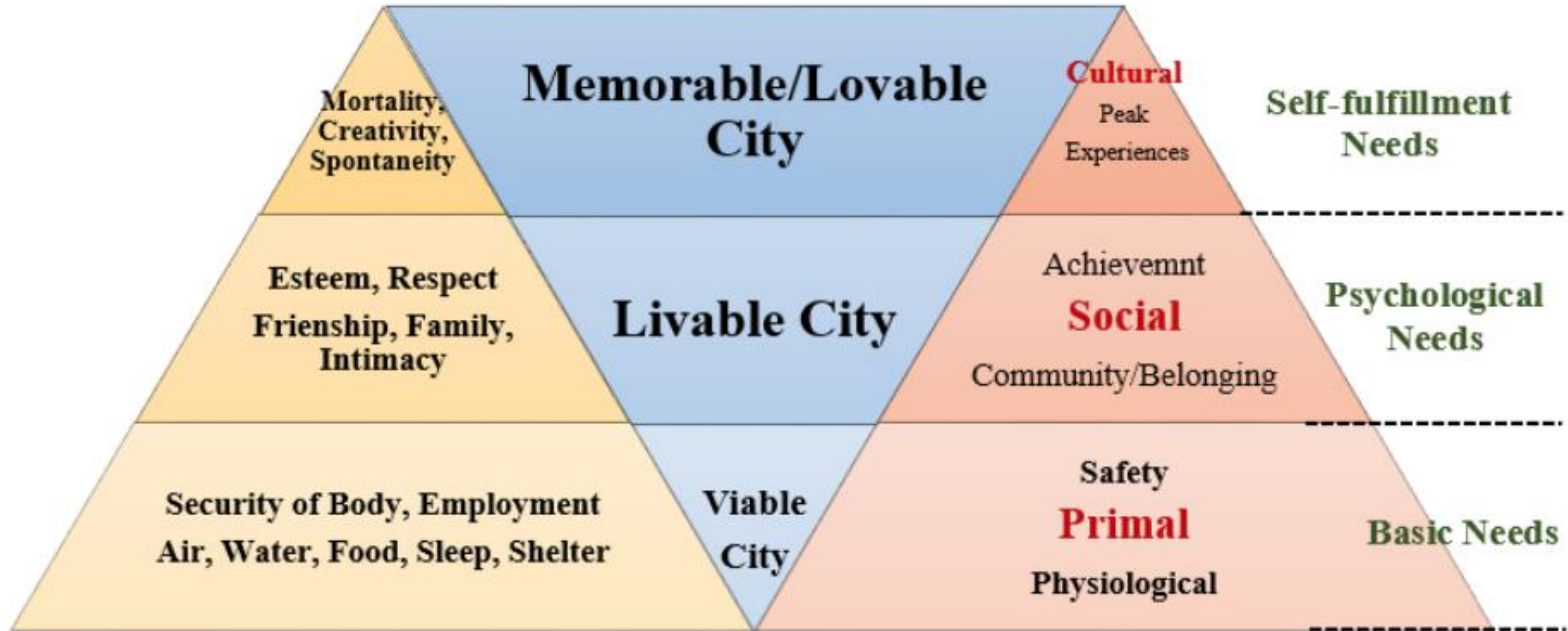
www.durham.ac.uk/ihrr

hannaruszczyk@weebly.com

Twitter

@_IHRR

@HRuszczyk



Typology of Cities

Source: Ahmed et al (2019, 175)